



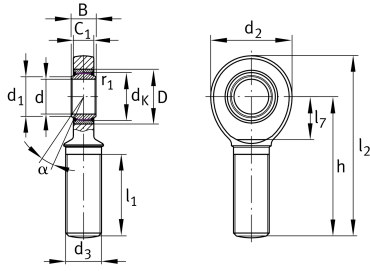
GAR40-UK-2RS-A

Rod end

Schaeffler ID:
0066456820000

Rod end with external thread, right hand thread, maintenance-free, sliding layer: ELGOGLIDE, DIN ISO 12240-4, dimension series E, type M, inner ring curved surface with hard chromium coating, sealed

Technical information



Main Dimensions & Performance Data

d	40 mm	Bore diameter bearing
d ₂	92 mm	Outer eye diameter
D	62 mm	Outside diameter bearing
l ₂	196 mm	Total length external thread rod
B	28 mm	Width inner ring
C _r	280,000 N	Basic dynamic load rating, radial
C _{0r}	194,000 N	Basic static load rating, radial
	1.97 kg	Weight

Dimensions

d _k	53 mm	Ball diameter
d ₁	45 mm	Outer flange diameter inner ring
d ₃	M39x3	Thread size
h	150 mm	Shank Length External thread rod
C ₁	23 mm	Width of the rod end
α	7 °	Tilt angle
l ₁	86 mm	Thread length external thread
l ₇	48 mm	Distance drilling with/shaft start
G _r	0 - 0,06 mm	Radial Clearance
d _{OT}	0 mm	Bore diameter bearing, upper tolerance
d _{UT}	-0.012 mm	Bore diameter bearing, lower tolerance
B _{OT}	0 mm	Width inner ring, upper tolerance
B _{UT}	-0.12 mm	Width inner ring, lower tolerance

Mounting dimensions

r _{1smin}	0.6 mm	Edge Spacing
--------------------	--------	--------------

Temperature range

T _{min}	-30 °C	Operating temperature min.
T _{max}	130 °C	Operating temperature max.